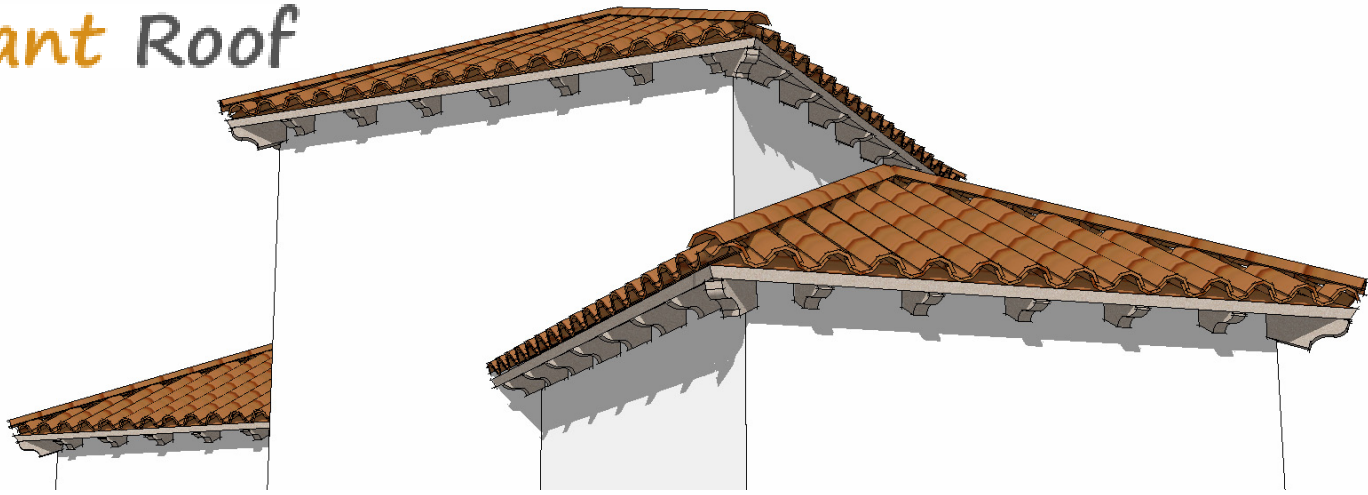


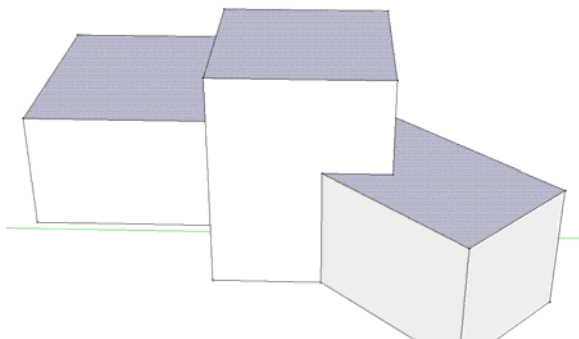
Instant Roof



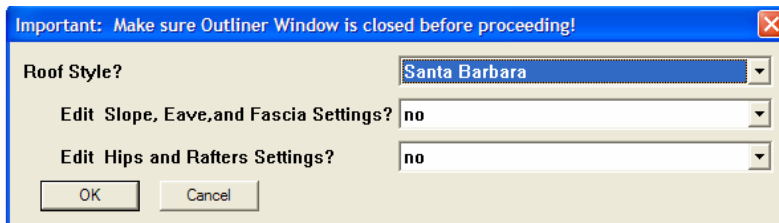
QuickStart Custom Rafter and Hip Ends

Instant Roof creates a component and attaches it to the ends of all rafters. This enables custom end detailing to be applied throughout by editing a single rafter. On Hip roofs, a hip component is added in a similar way.

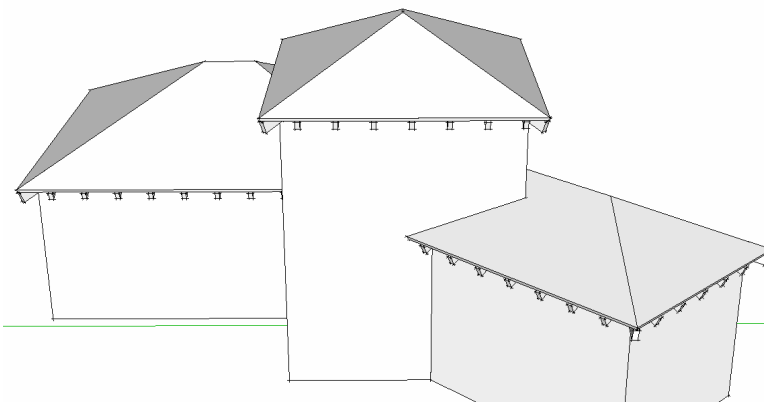
1. Draw several attached boxes.
2. Select the top faces.



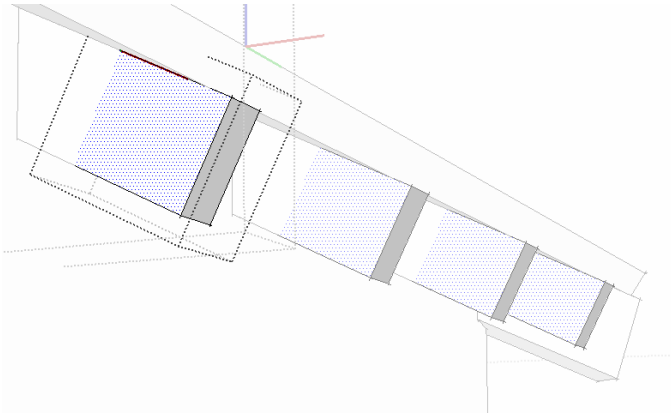
3. Choose “**Plugins/ Instant Roof/ Make Roof**”. In the pop-up menu, then choose “**Santa Barbara**” from the “**Roof Style?**” pull down menu.



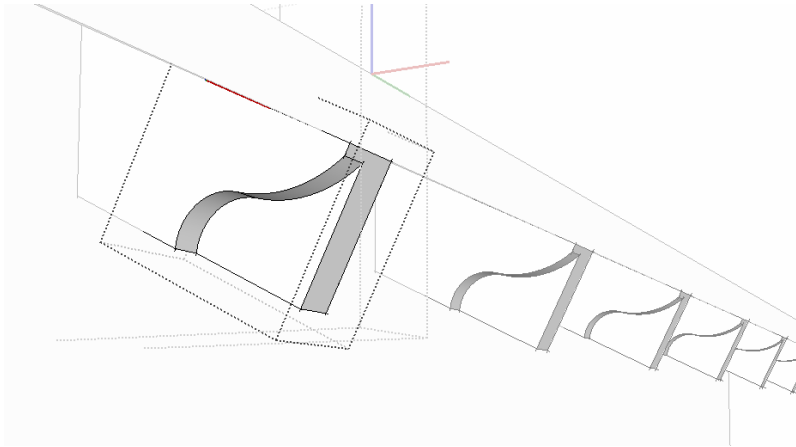
4. Choose “**OK**” to accept default parameters and generate the roof. The script should draw something like this:



5. Double click a rafter end twice to open it for editing.



6. Draw a curve on the side of the rafter and use the push-pull tool to cut off the end.



7. Repeat steps 5 and 6 on one of the hip ends:

