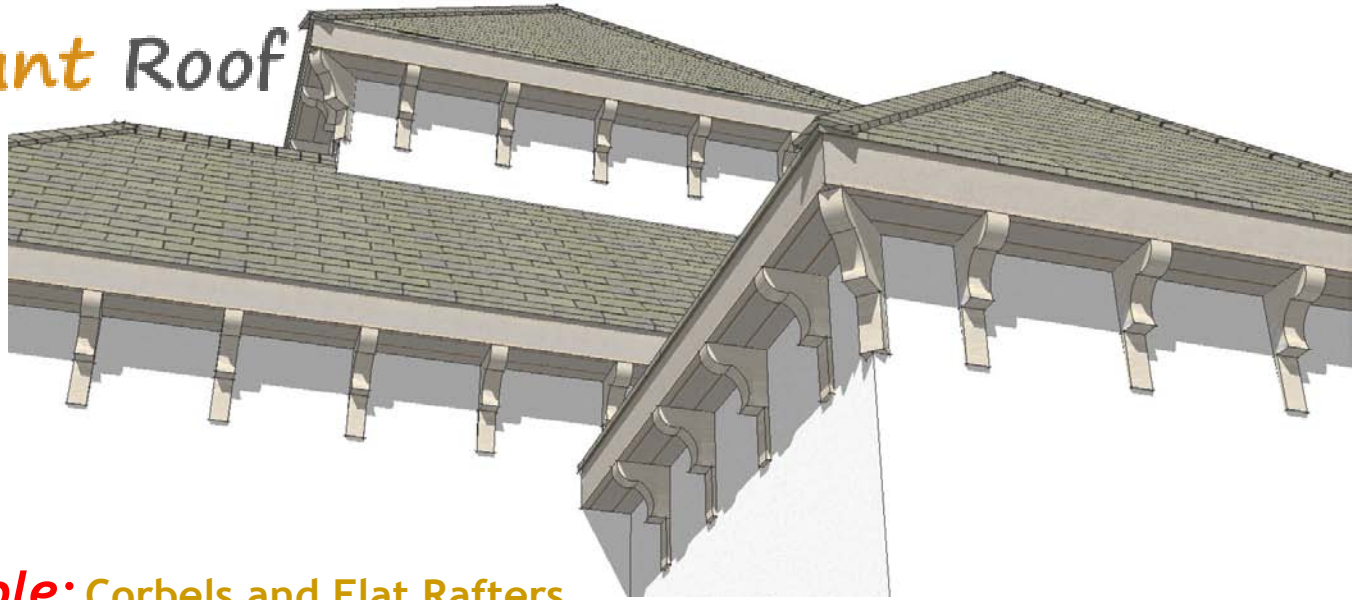


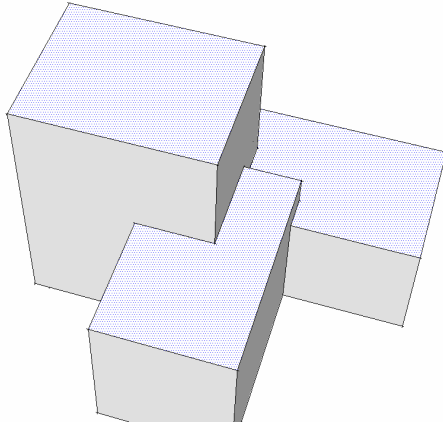
# Instant Roof



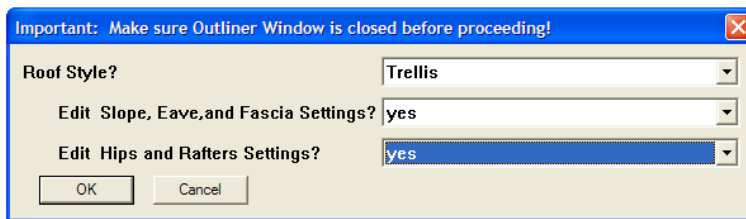
## Example: Corbels and Flat Rafters

Corbels and Flat Rafters can be created for soffit eave types - but not directly. This requires a few additional steps as shown here.

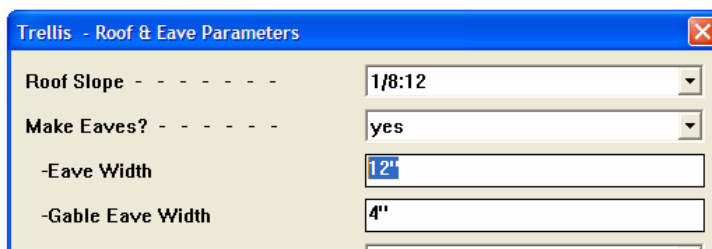
1. Draw some geometry similar to below and select the top faces.



2. Choose **“Plugins/ Instant Roof/ Make Roof”**. In the pop-up menu, choose **“Trellis”** from the **“Roof Style?”** pull down menu and choose **“yes”** for the other 2 options. Choose **“OK”**



3. In the **“Roof & Eave Parameters”** menu, enter **12”** for **“Eave Width”** and choose **“OK”**:



4. In the **"Hip & Rafter Parameters"** menu, enter **12"** for **"Hip Depth"**; **12"** for **"Rafter Depth"**; choose **"3/4"** for hip and rafter **"End Component...Ratio"**s; and choose **"OK"**.

Trellis - Hip & Rafter Parameters

Make Hips? yes

\_ Hip Width 4"

\_ Hip Depth 12"

\_ End Component/Rafter Length Ratio 3/4

Make Rafters? yes

\_ Rafter Width 4"

\_ Rafter Depth 12"

\_ Rafter Spacing 2' 6"

\_ Place Barge Rafter? no

\_ Barge Rafter Inset 2"

\_ End Component/Rafter Length Ratio 3/4

Make Rafter and Hip Top Surfaces? yes

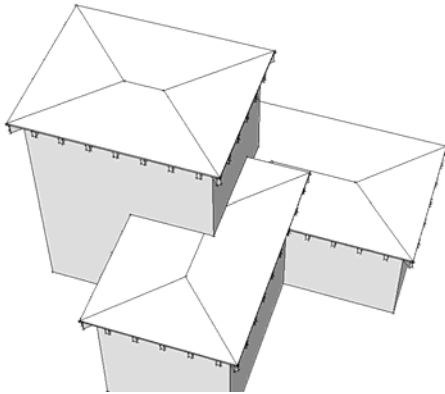
OK Cancel

5. Choose **"no"** in the **"Save Changes..."** menu and choose **"OK"**.

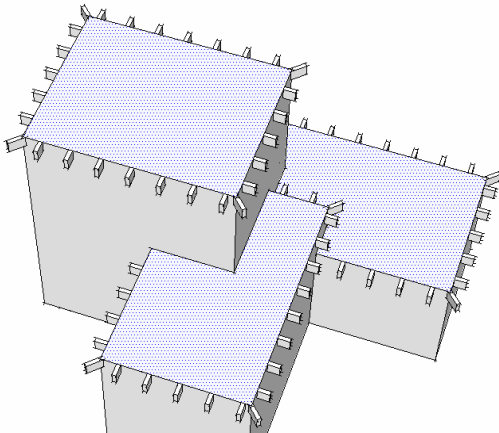
Save Changes as New Style? no

OK Cancel

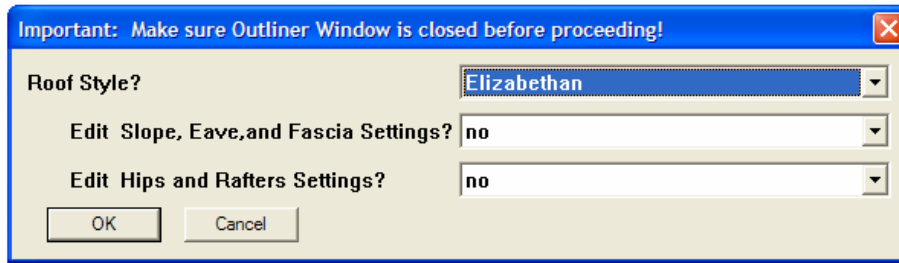
6. A flat roof will be created. Select and erase the group containing the fascia and the group containing the top surface.



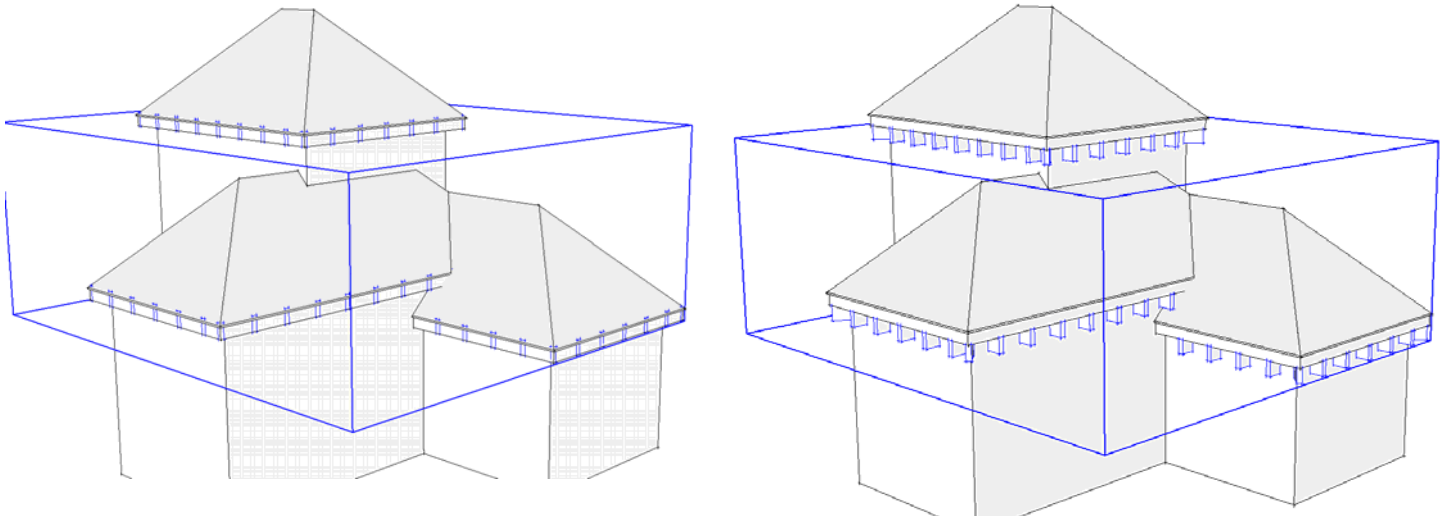
7. Reselect the top faces and Choose **"Plugins/ Instant Roof/ Make Roof"**.



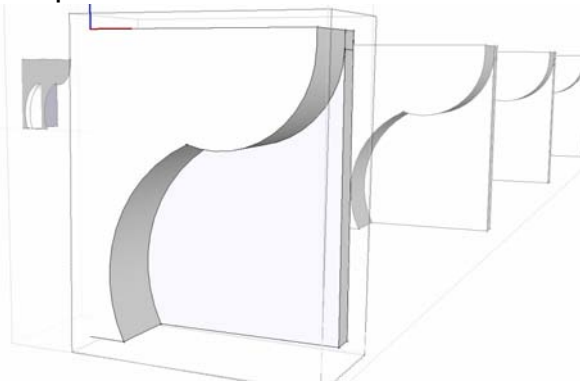
8. In the pop-up menu, choose “**Elizabethan**” from the “**Roof Style?**” pull down menu and choose “**OK**” to generate the roof.



9. Select the group containing the rafters and move it down to the underside of the soffit:



10. Double click a rafter end twice to open it for editing and make some modifications to the end component.



11. Repeat step 10 for a hip. Here I also added materials plus some hips using **Instant Roof**:

