

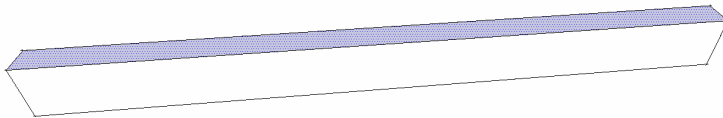
# Instant Roof



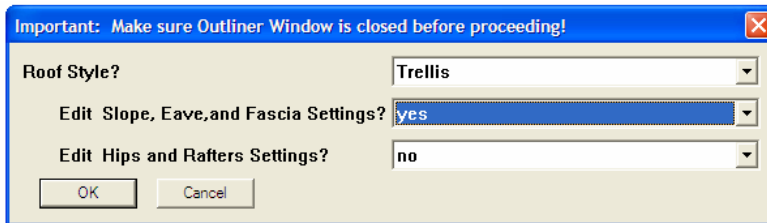
## Example: Hipped Trellis

In this lesson I make a sloped hip roof trellis. A Gable or Flat trellis can also be made with this method.

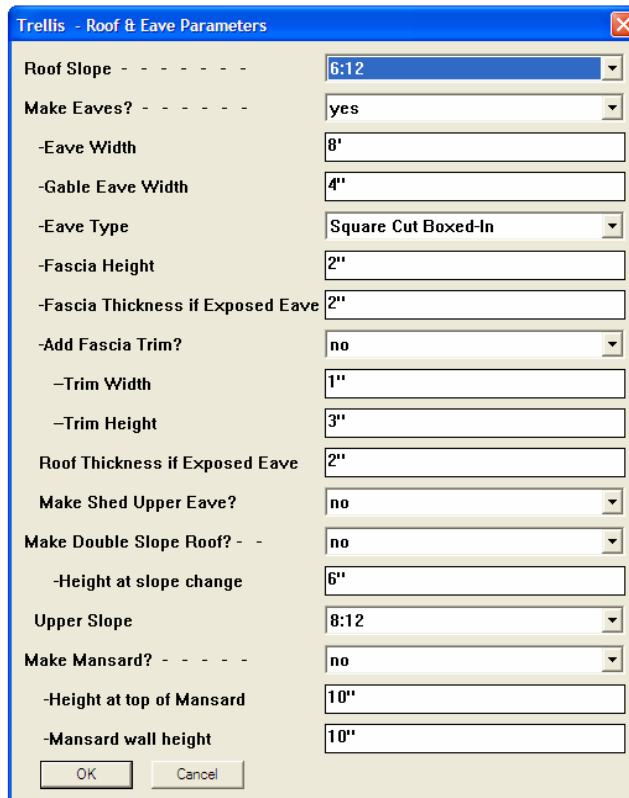
1. Draw a beam shape and select the top face as shown below. Think of the top of the beam as a building outline and the trellis as a wide eave extending from the building.



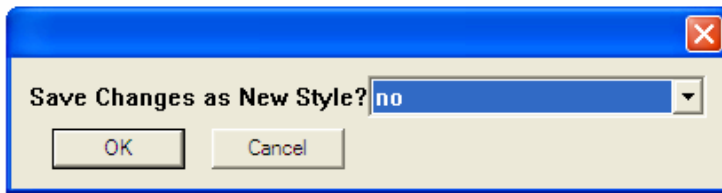
2. Choose **“Plugins/ Instant Roof/ Make Roof”**.



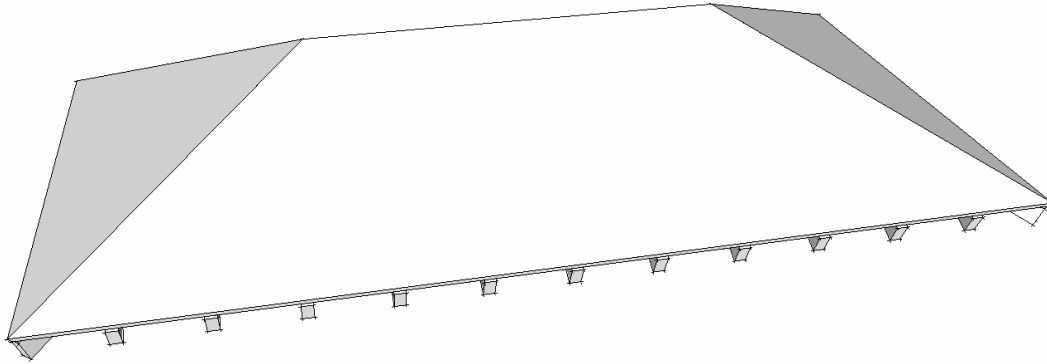
3. In the pop-up menu, then choose **“Trellis”** from the **“Roof Style?”** pull down menu. In the second field, **“Edit Slope, Eave, and Fascia Settings?”**, choose **“yes”**. Then choose **“OK”** to show the next menu:



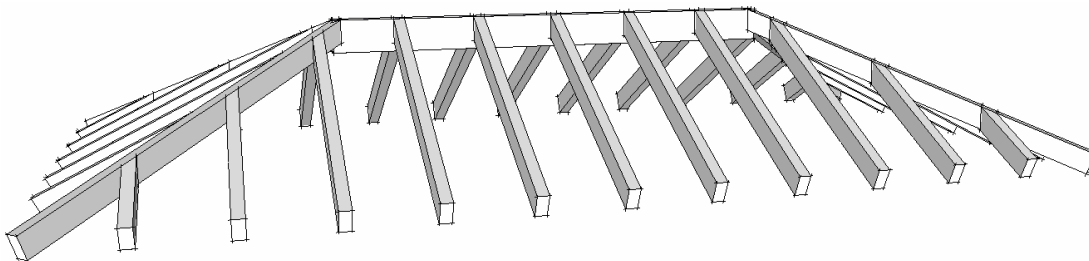
4. Under “**Roof Slope**”, choose “**6:12**”. Then choose “**OK**” to show the next menu:



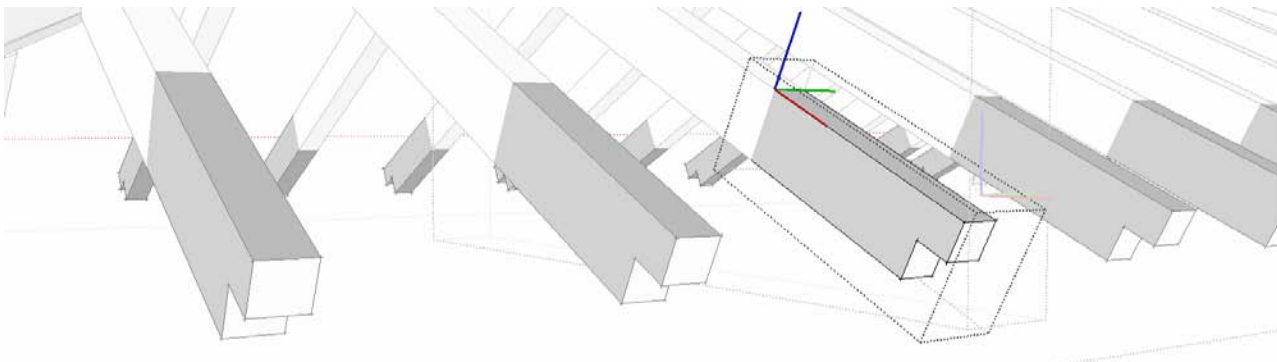
5. Choose “**OK**” to accept the changes without making a new style. A Hip roof will be generated:



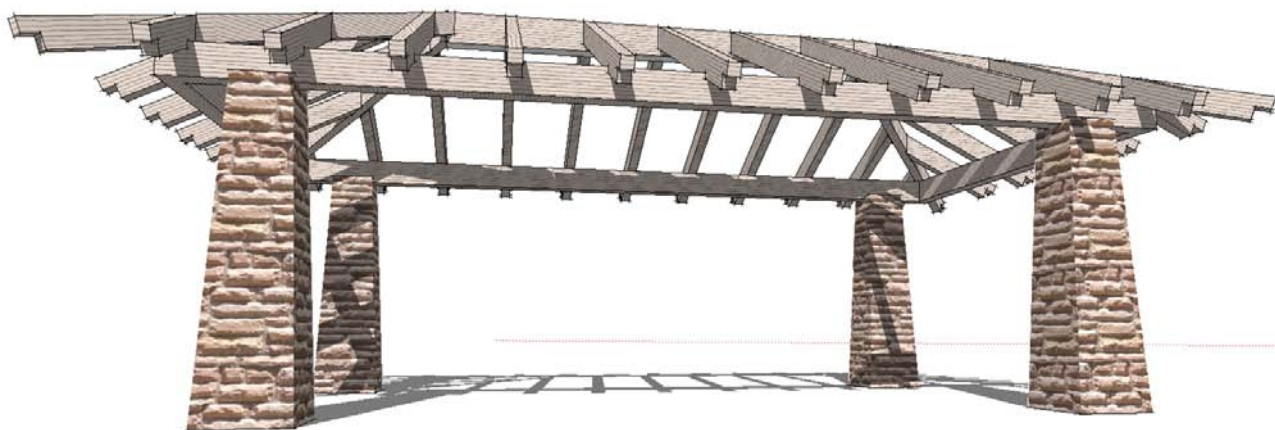
6. Select and erase the 2 groups containing the roof surface and fascia to retain only the beams:



7. Double click the end of a rafter twice to open the end component for editing. Here I draw a horizontal line on the end and used the push-pull tool to make a notch.



8. I edited a hip beam similarly. Then added some columns, beams, and texture to get the completed structure:



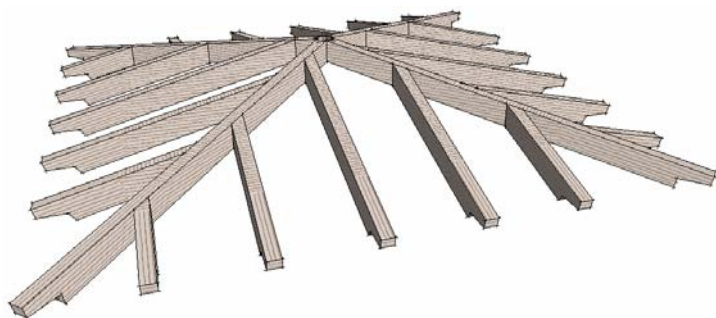
9. Here are a few more open beam structures that were made using the same method:



Extrude a circle to make a post. Select the top of the post and repeat steps 2-5.



Draw an "L" shaped beam. Select the top face and repeat steps 2-6.



Draw a small square face. Select it and repeat steps 2-6.



Draw a beam. Select the top face plus the short edges on each end. Repeat steps 2-6.