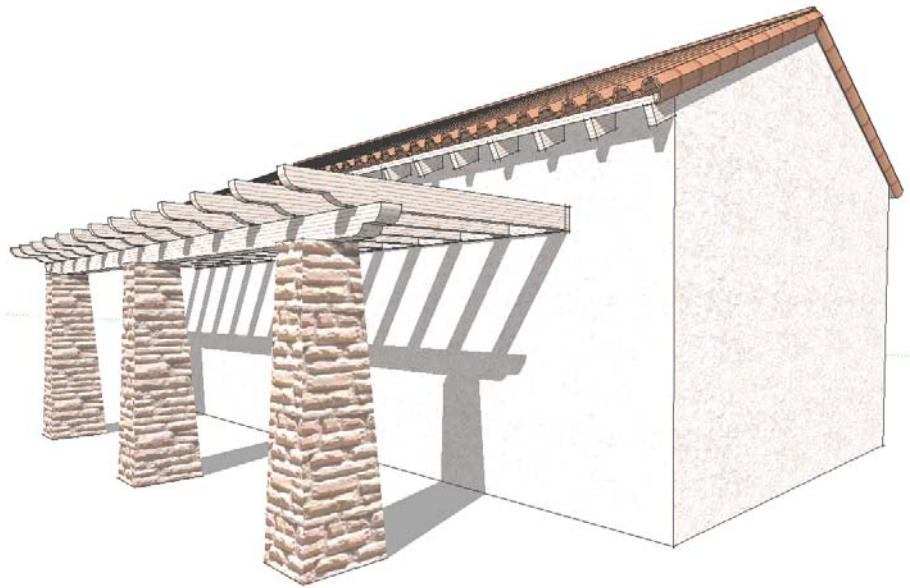


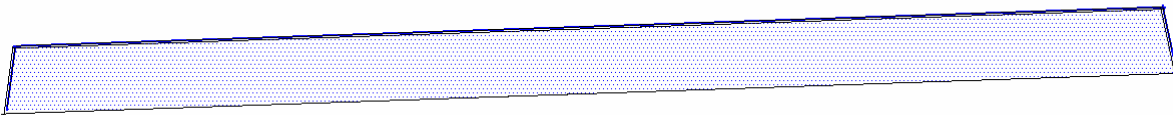
Instant Roof

Example: Trellis

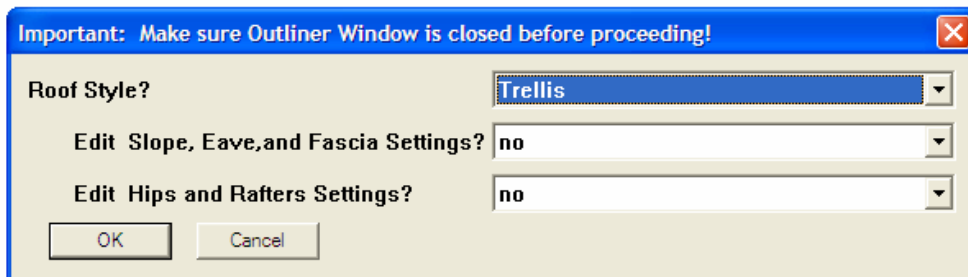
Think of a wall trellis as a wide eave extending from a shed roof.



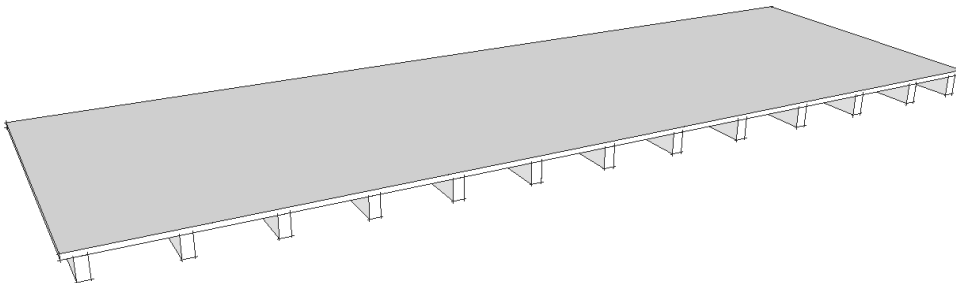
1. Draw a rectangular horizontal face and select the face plus 3 edges as shown below:



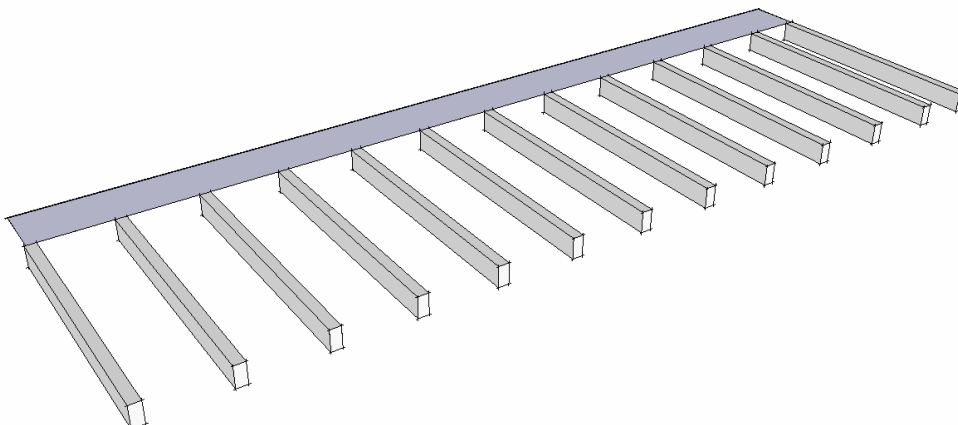
2. Choose **“Plugins/ Instant Roof/ Make Roof”**. In the pop-up menu, then choose **“Trellis”** from the **“Roof Style?”** pull down menu.



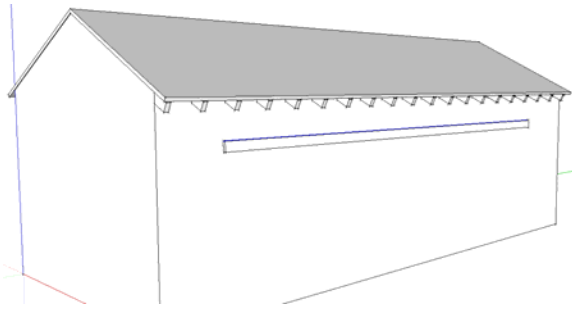
3. Choose **“OK”** to accept default parameters and generate the Trellis.



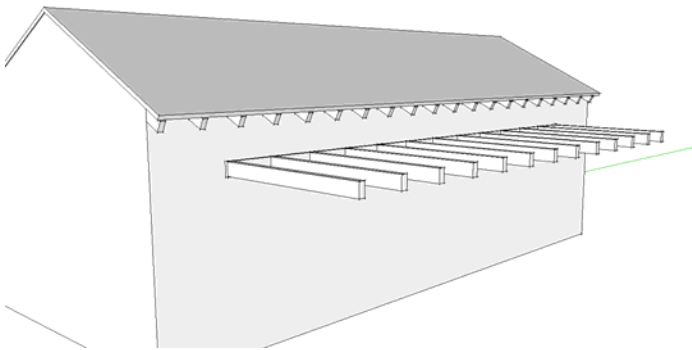
4. For an open trellis, we erase the roof. Select and delete the 2 groups that make up the roof.



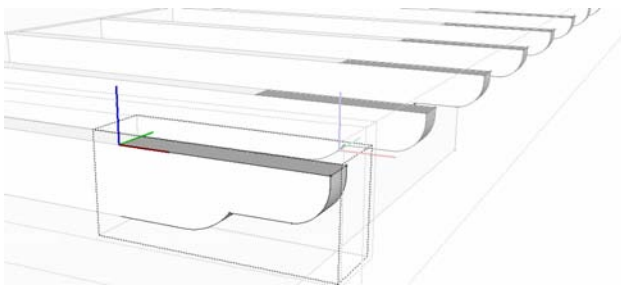
5. So, now let's make a wall trellis. Start with a building and draw a ledger on the wall. (Draw a long rectangle and push-pull it out from the wall a few inches) Then select the top face of the ledger plus 3 edges similar to step 1.



6. Repeat steps 2, 3 and 4 to generate the wall trellis:



7. Double click the end of the trellis beam twice to open it for editing. I drew some arcs on the side and used the push-pull tool to cut off the end:



8. Then I added a beam, some columns, textures and roof details for the final structure:

