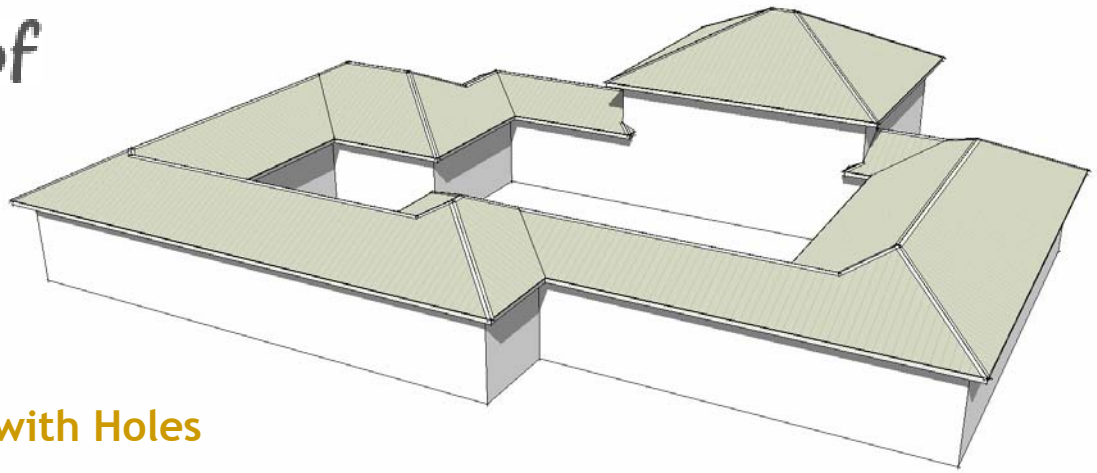


Instant Roof

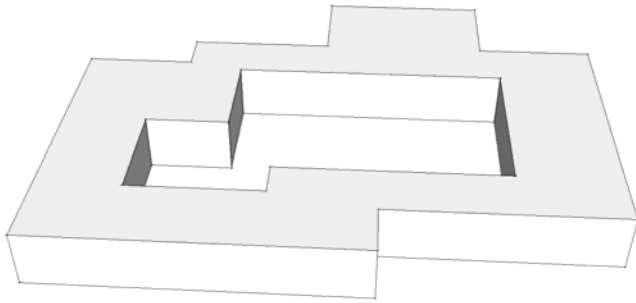


Examples: Roofs with Holes

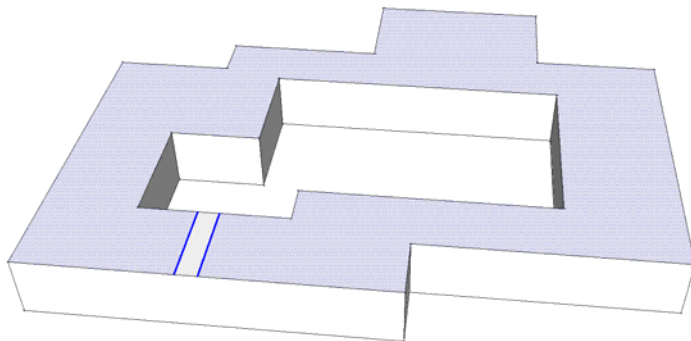
Instant Roof ignores holes in faces - so it can not generate a courtyard directly. Here are a couple of work-a-rounds.

Example 1: Break loop face and rejoin roof elements

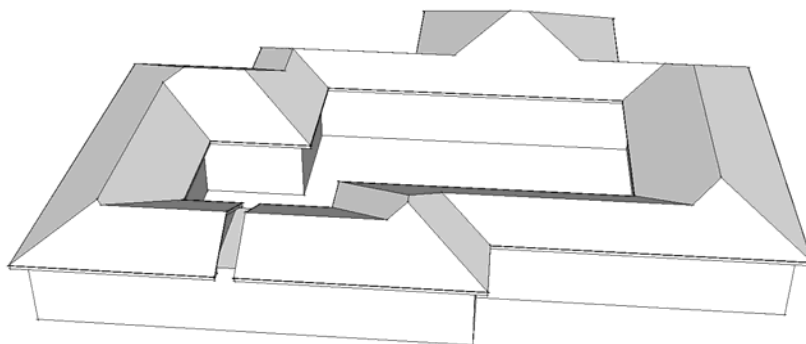
1. Draw some geometry similar to below.



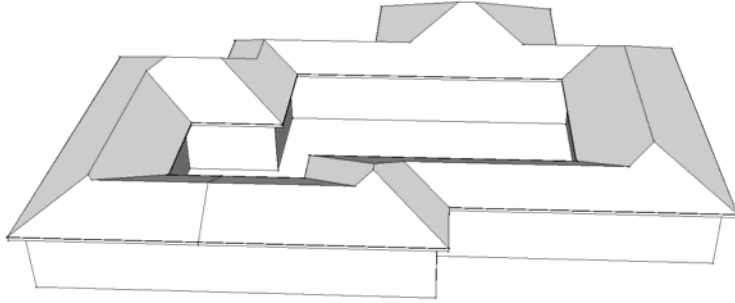
2. Draw 2 parallel lines as shown and select the face plus the 2 lines. Don't select the small strip between the lines. Choose "**Plugins/ Instant Roof/ Make Roof**". In the pop-up menu, choose a style from the "**Roof Style?**" pull down menu.



3. Choose "**OK**" to generate the roof:

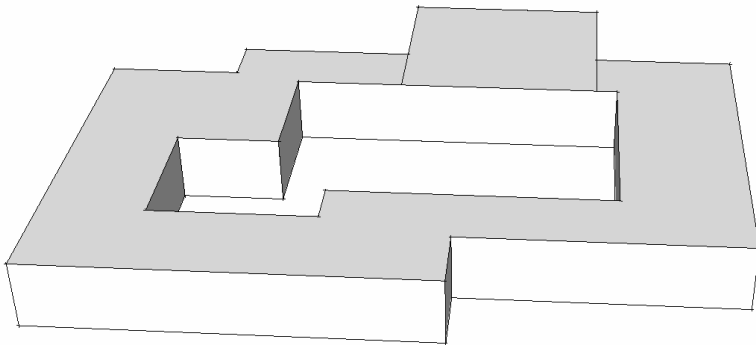


4. Double click the roof surface to open the group for editing. Move one gable edge over to align with the opposite gable edge. Erase the adjoining lines. Double click the fascia to open the group for editing, and do the same with the fascia and eave. (If a style with rafters was chosen, the rafter spacing may have to be adjusted also)

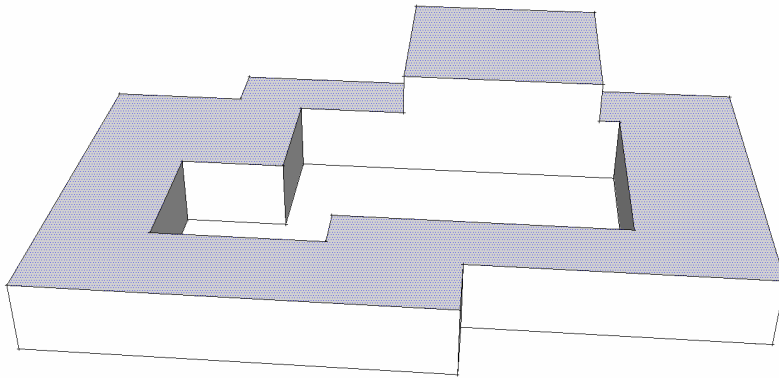


Example 2: Break loop face with a higher or lower building element.

5. The courtyard roof can be made directly if at least one portion of the roof is higher or lower and has a separate roof. Using the same geometry as in step 1, draw a couple of parallel lines and extend a portion of the roof up as shown:



6. Select the 2 faces as shown. Choose "**Plugins/ Instant Roof/ Make Roof**". In the pop-up menu, choose a style from the "**Roof Style?**" pull down menu.



7. Choose "**OK**" to generate the roof.

