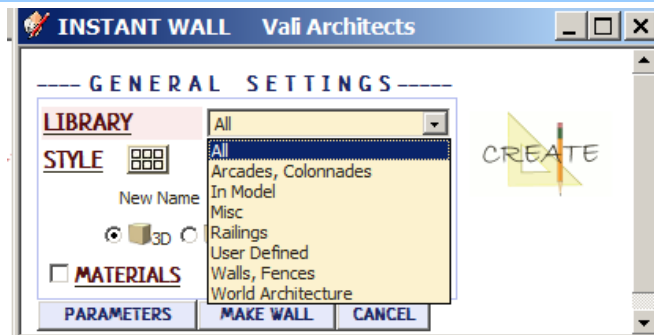


# Instant Wall Wall Styles

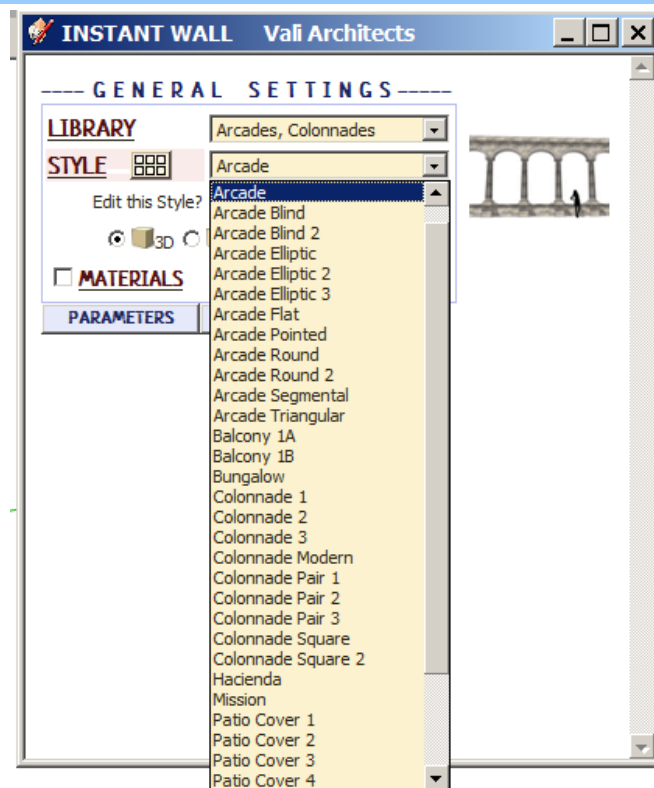
*With Preset Wall Styles, the script can be used without the need to learn parameter settings*


- Wall Styles are saved sets of parameters.
- Libraries are groups of Wall Styles.
- When a style is used in a model, it is entered into the "In Model" style library and saved with the file.
- New styles are easily created by saving a modification to an existing style.

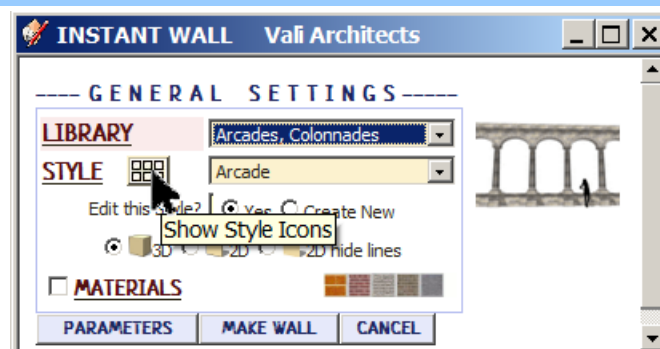
**Wall Style Libraries** There are 7 libraries. They are displayed in the "LIBRARY" drop down list.



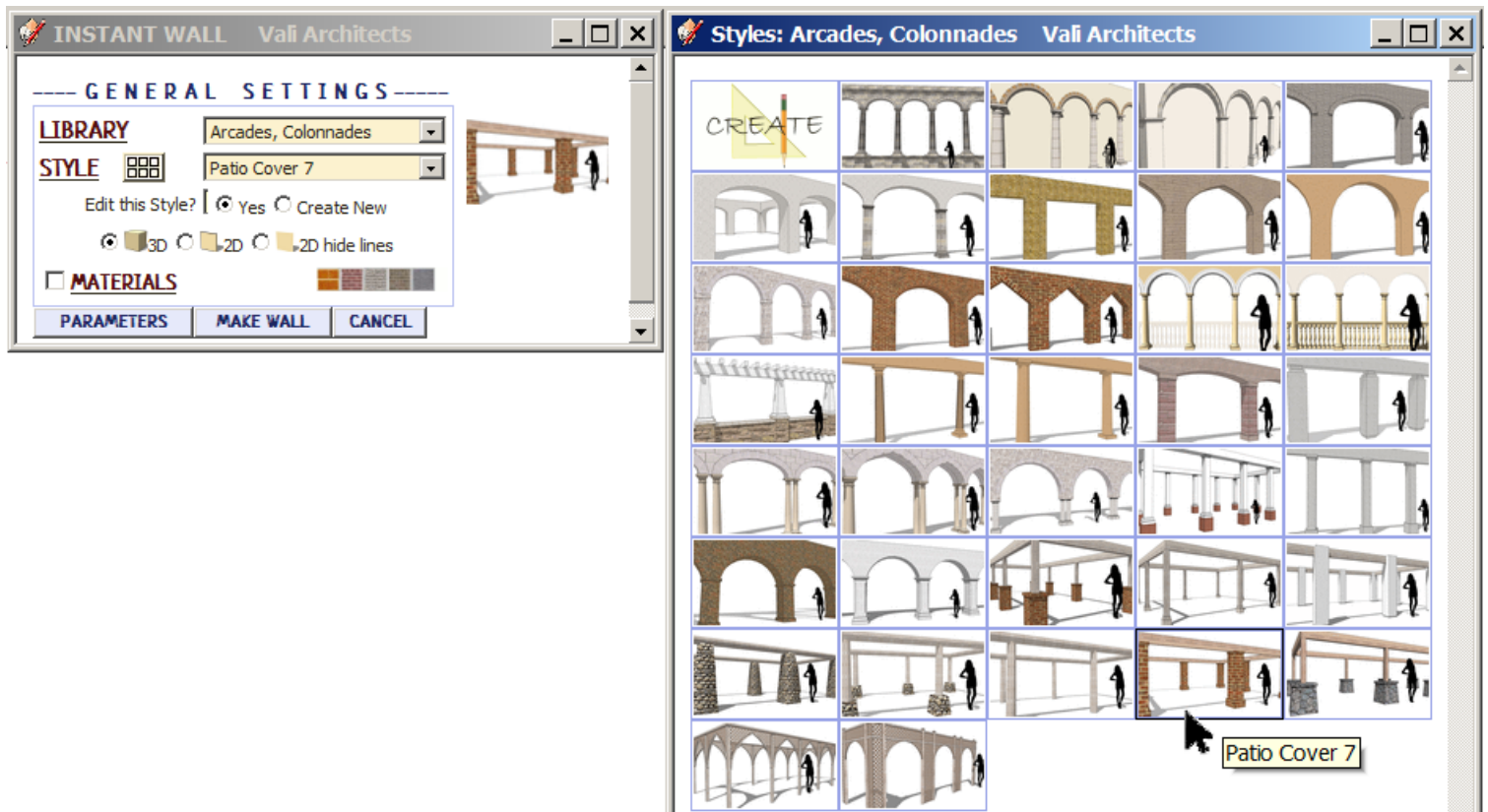
**Wall Styles** A style is chosen from the 'STYLE' pull down list for the selected library.



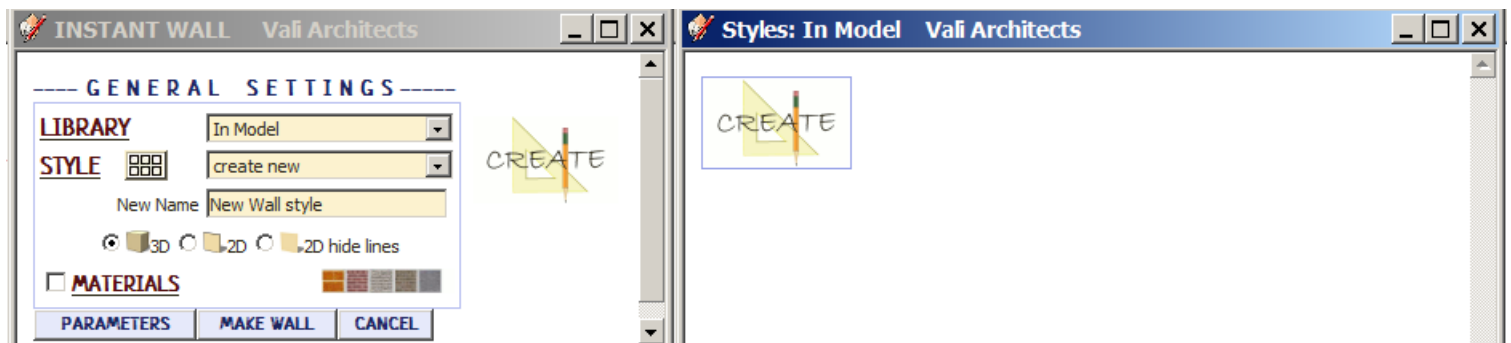
**Style Icon Menu** Styles can also be chosen from an image menu by clicking. 



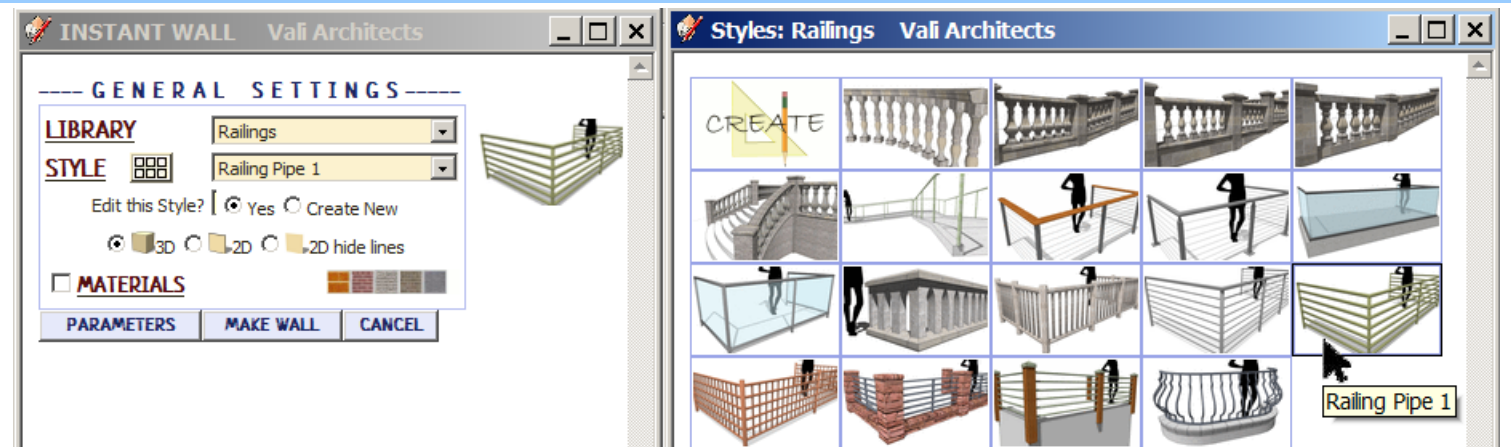
## Arcades, Colonnades library



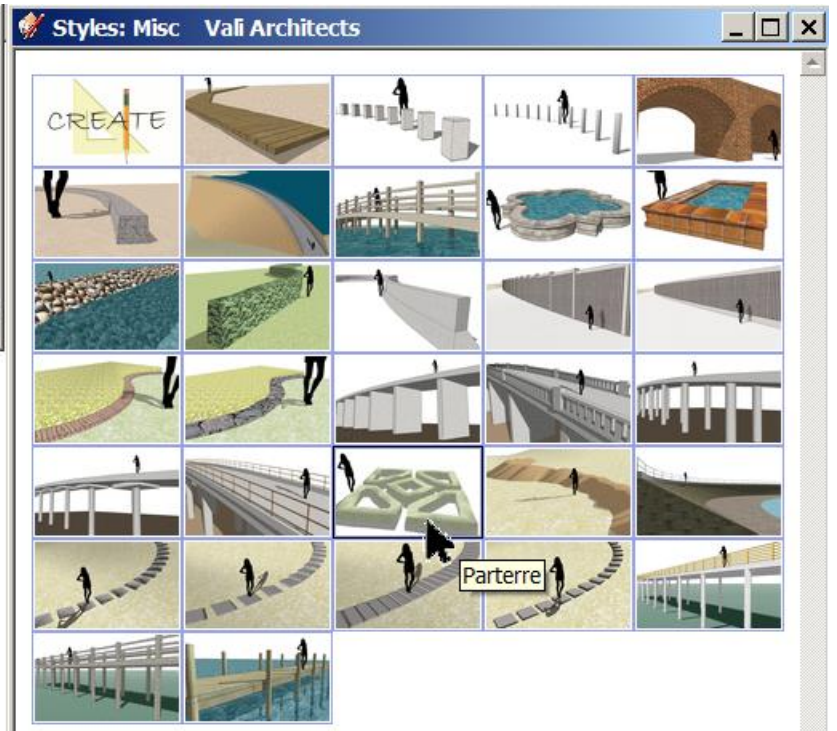
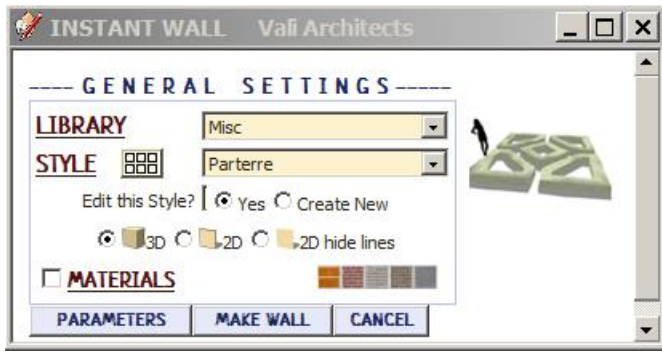
**In Model library** - Displays styles that are used in the model. It's empty because I haven't created a wall in this model yet.



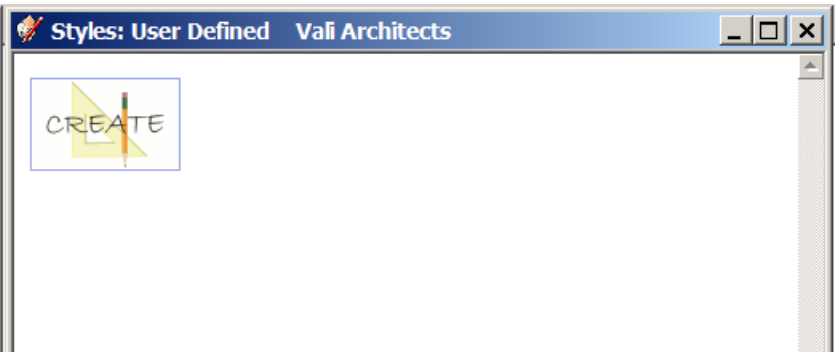
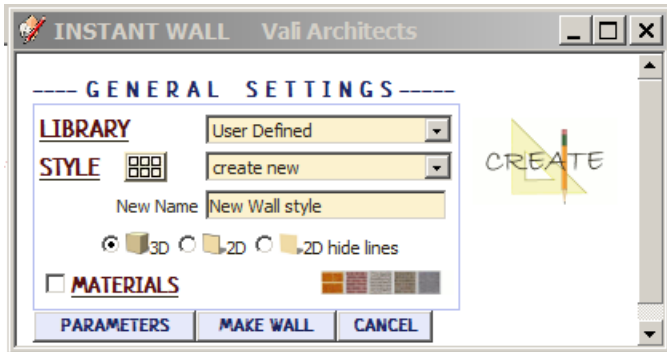
## Railings library



# Misc library

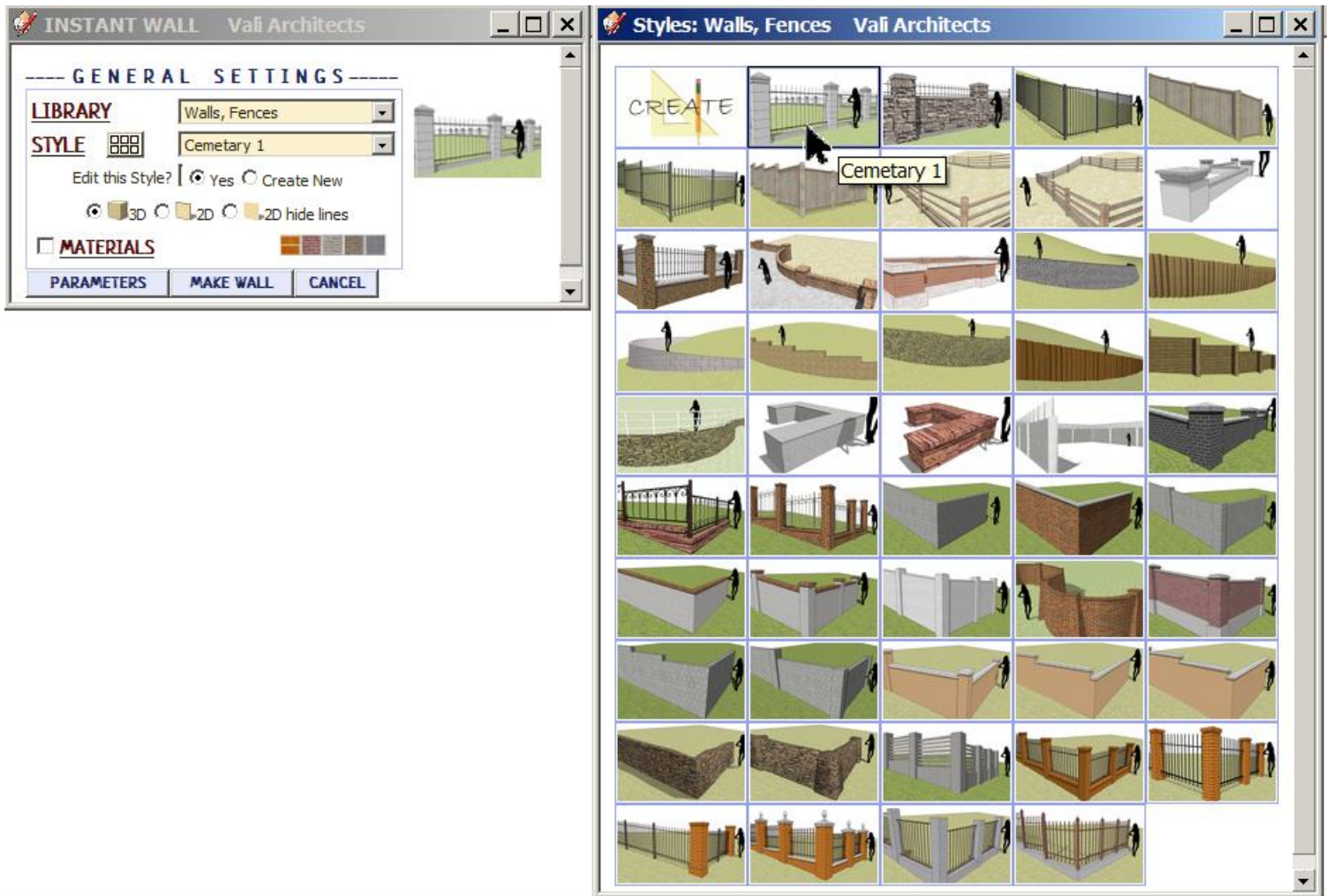


**User Defined** library - It's empty because I haven't created any custom styles yet.

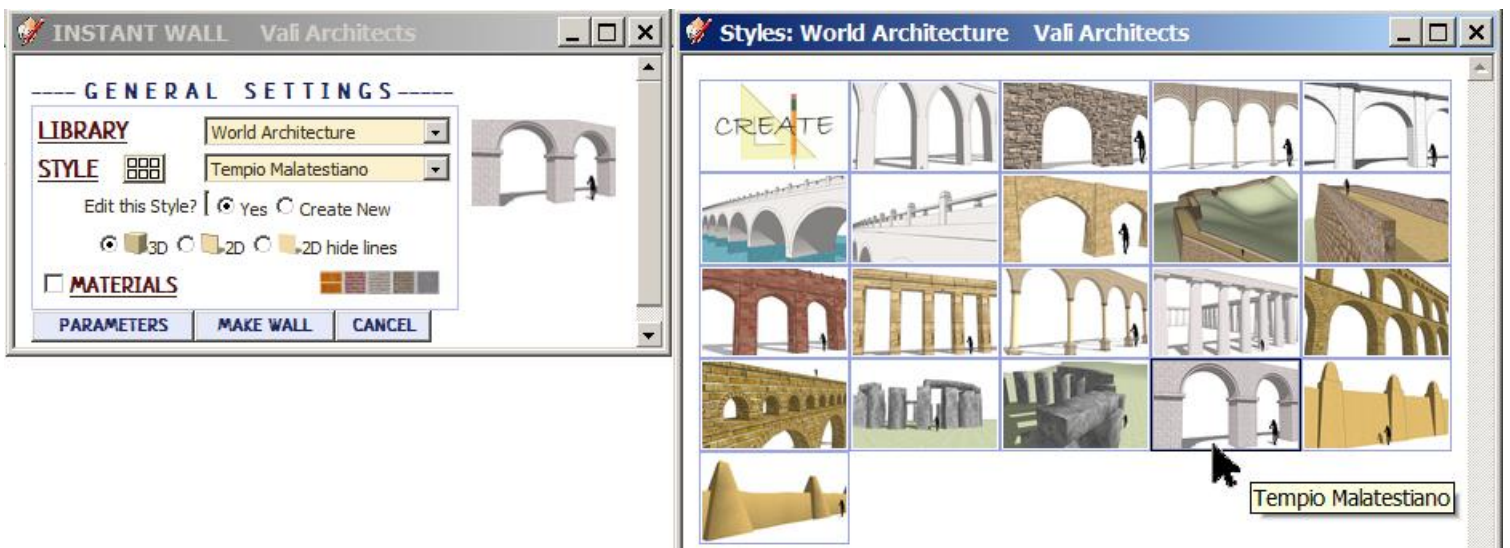




# Walls, Fences *library*

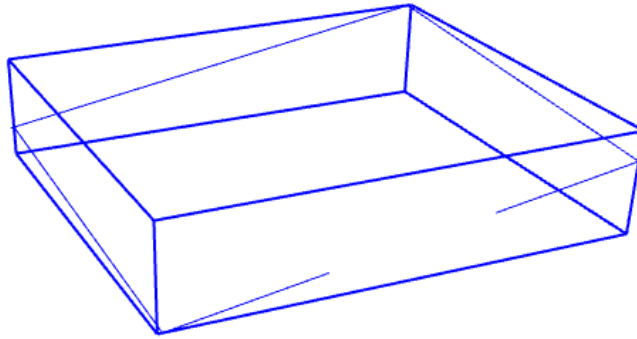


# World Architecture *library*



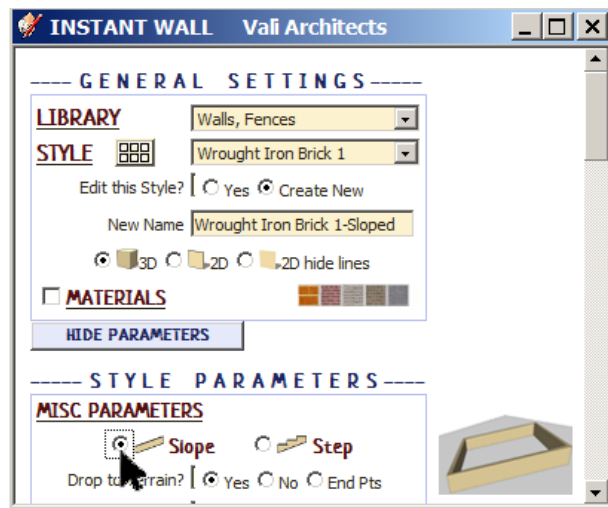
## Create New Style *Example*

1. I made a group enclosing a center line for the wall.

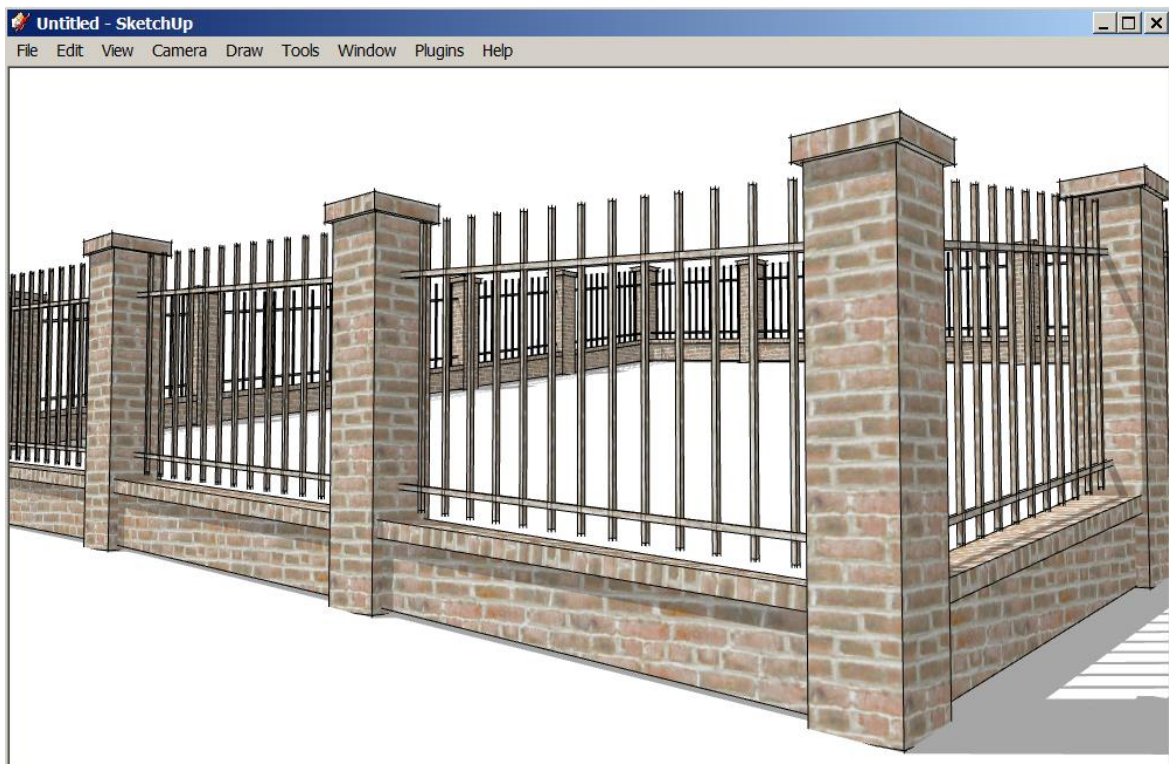


2. Selected the preset style “Wrought Iron Brick 1” and edited a single parameter -changing from a stepped condition to a sloped condition.

3. Created a new style named “Wrought Iron Brick 1-Sloped”.

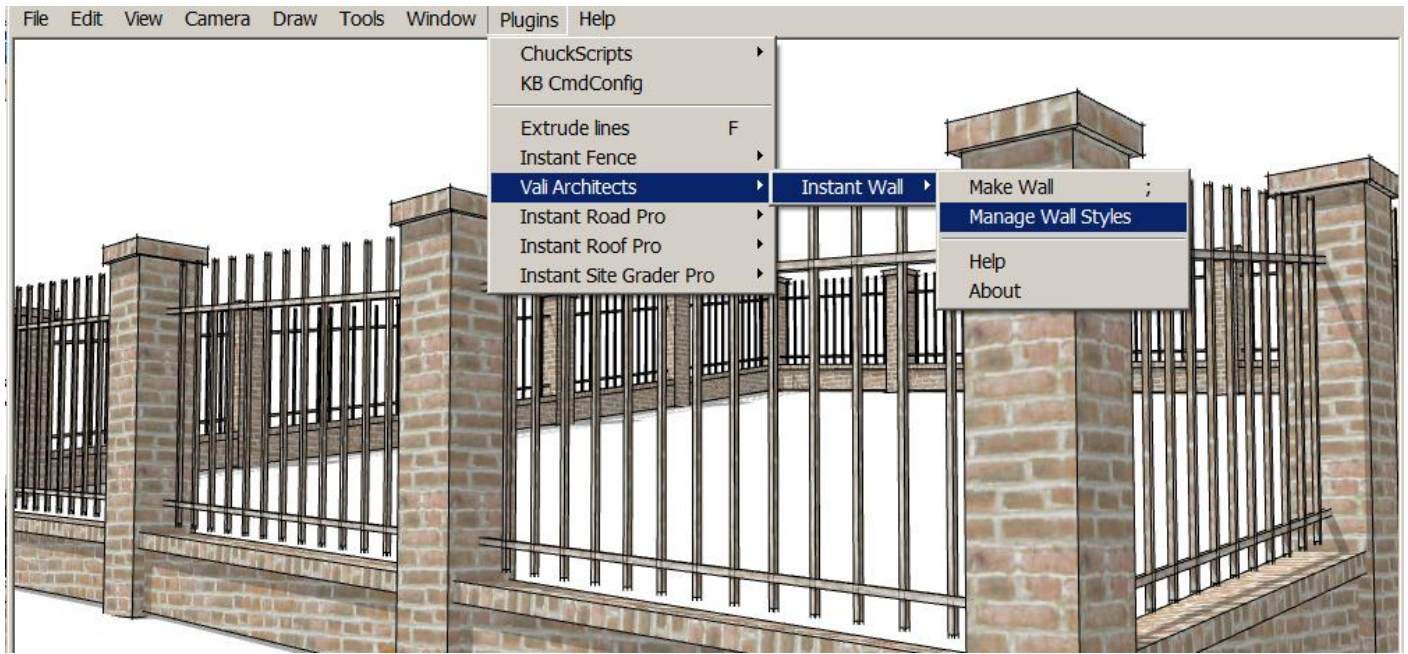


4. Created the wall and zoomed/panned to the view I want to use for the new style icon.

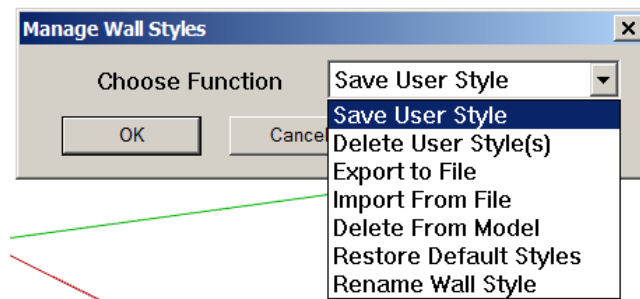




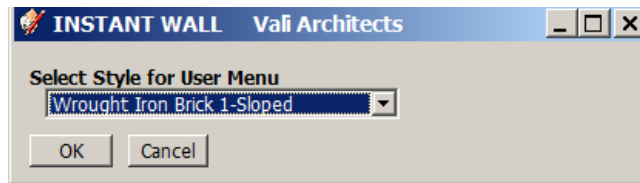
5. Selected "Manage Wall Styles" from the Instant Wall menu.



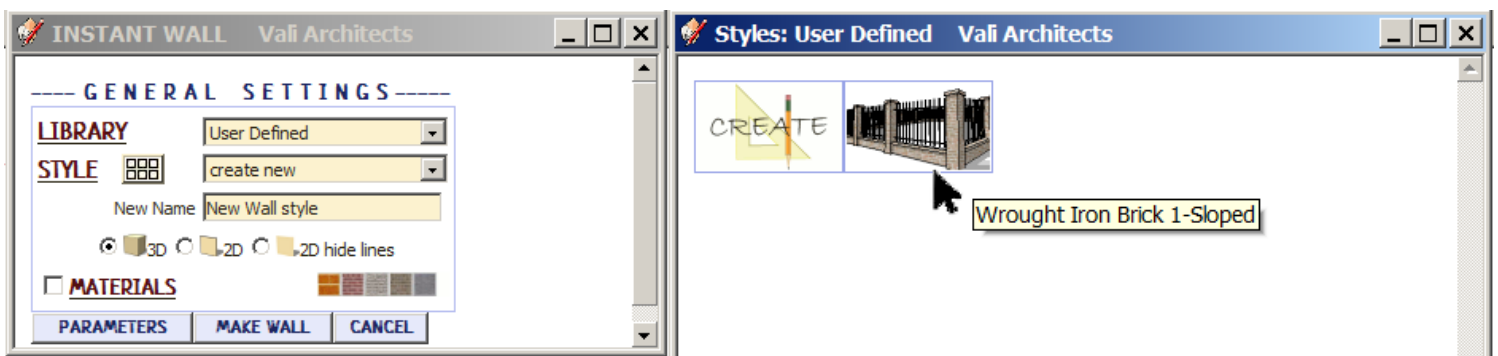
6. Selected "Save User Style".



7. Selected the new style "Wrought Iron Brick 1-Sloped" and clicked "OK".

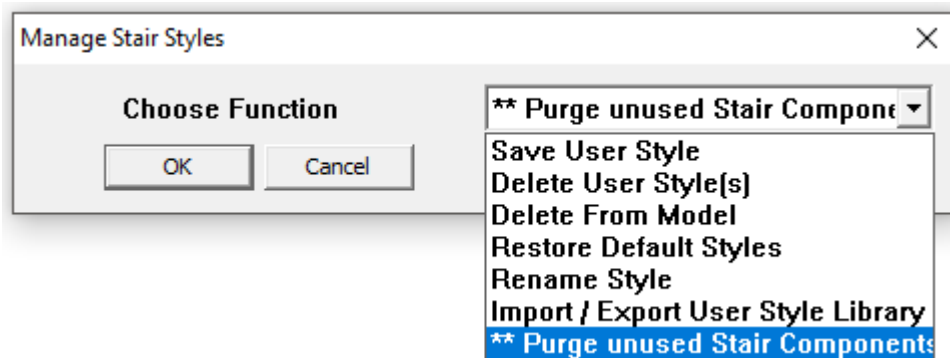


8. The new style "Wrought Iron Brick 1-Sloped" is now displayed in the "User Defined" library and will be available to all SketchUp models and sessions.



## Manage Wall Styles

Choose “Plugins / Vali Architects / Instant Wall / Manage styles” or click the  icon.



**Save User Style:** Creates Menu entry as described above.

**Delete User Style(s):** Erases saved User Styles and associated icons.

**Export to File:** Exports style to an external file

**Import From File:** Imports external style file

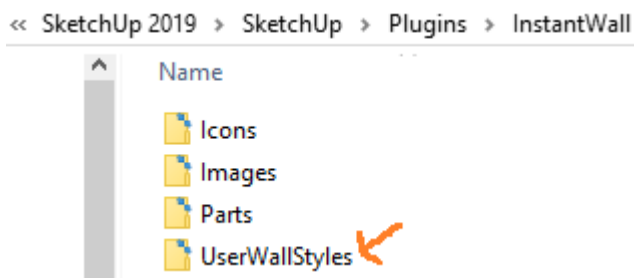
When a style is used in a drawing, that style - including any changes made to it - will be saved with the file and displayed in the “In Model” library. If a change is made to a preset style (but not given a new name) the preset style will be redefined and saved for that model only. This allows a model with customized styles to be saved as a template file. The next 3 methods permit modifications to these style definitions in the model.

**Delete From Model:** Removes selected styles from the “In Model” library and restores preset style definitions.

**Restore Default Styles:** Removes ALL style definitions in the model. (Empties “In Model” library and removes any changes to preset styles that have been saved in the model.)

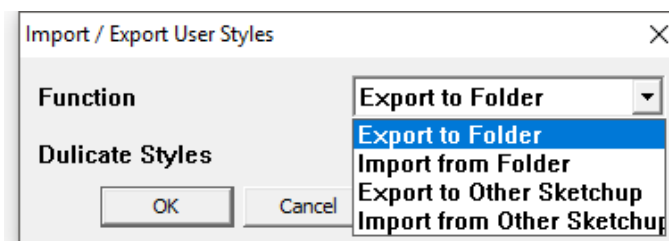
**Rename Wall Style** Rename a style in the “In Model” library. If the style name to change matches a preset name, the preset style will be restored to default.

To use your User Styles on a different computer or different version of Sketchup, copy the contents of the UserWallStyles folder to the same location in the other Sketchup plugins folder.



Alternatively, you can use the Import / Export methods shown below.

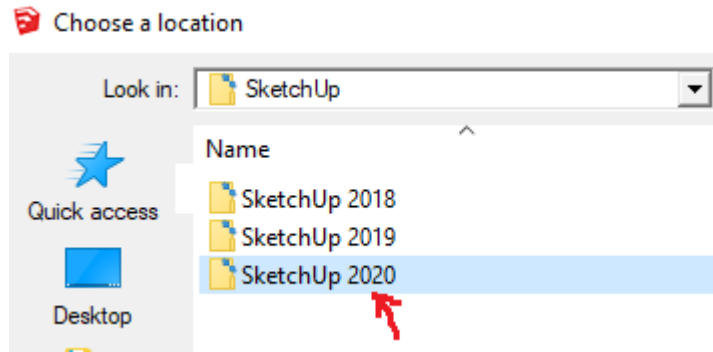
**Import / Export User Style Library** For copying your user styles to a different version of Sketchup or a different computer. (Note: you can also copy your user styles manually. They are found in your Sketchup Plugins folder for this extension.)



**Export To Folder** Copies the User Styles to a location on your computer that you select.

**Import from Folder** Copies a User Styles folder into Sketchup from a location you select.

**Export To Other Sketchup** When you upgrade to a different version of Sketchup, you can make your User Styles available in the new version by choosing it when prompted:



**Import from Other Sketchup** When you upgrade to a different version of Sketchup, you can make your User Styles available in the new version by choosing the old version of when prompted:

